

5V	REF2	REF3	REF1
GND		REF2	
3V3		REF3	
CSN_C		REFR1	
SCK_C		D2	
SDI_C		S2	
SDO_C		D3	
CLK		S3	
PSCMP		D1	
nINT_SDO_C		S1	

TMC429-LA_BOB
1.1



REF1 5V

REF2 GND

REF3 3V3

REFR1 CSN_C

D2 SCK_C

S2 SDI_C

D3 SDO_C

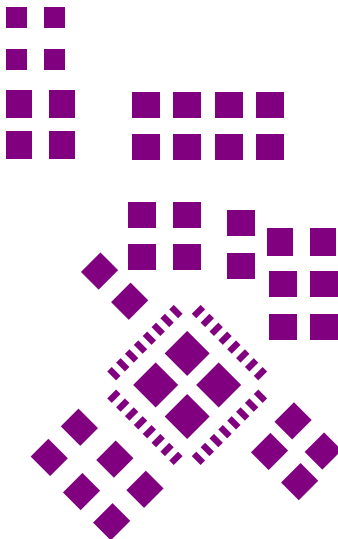
S3 CLK

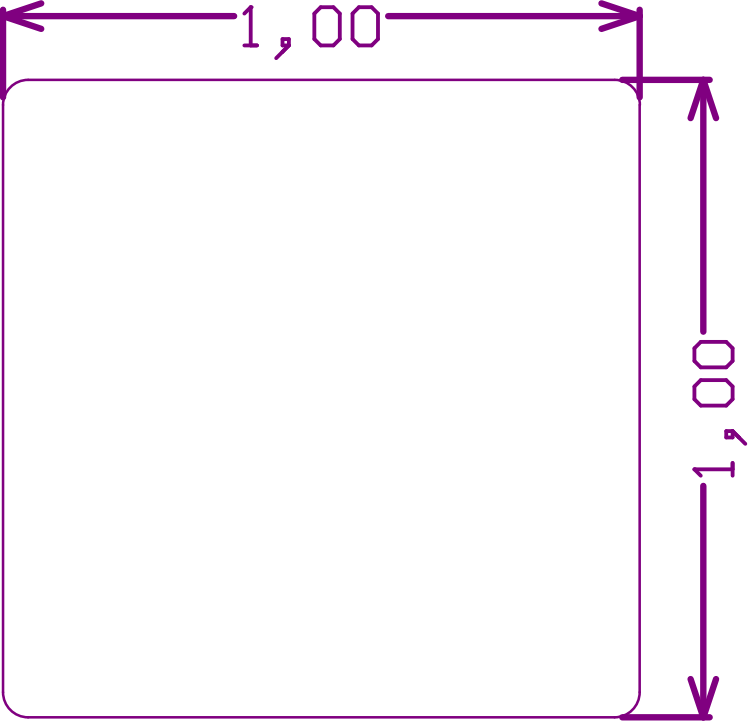
D1 PSCMP

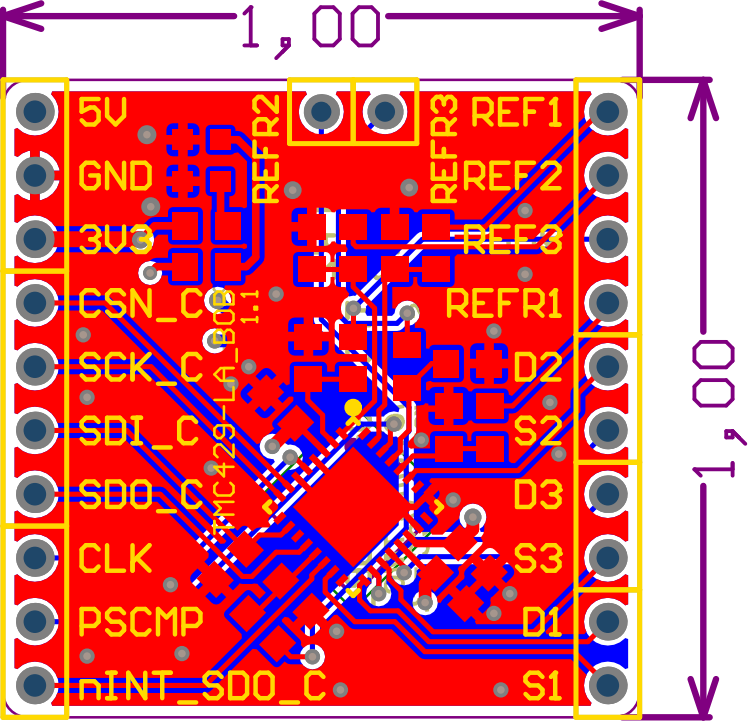
S1 nINT_SDO_C



REFR2
REFR3
TMC429-LA_BOB_U1.1
IC name: TMC429-LA
Supply range: VCC = 3.3...5V







ChangeLog

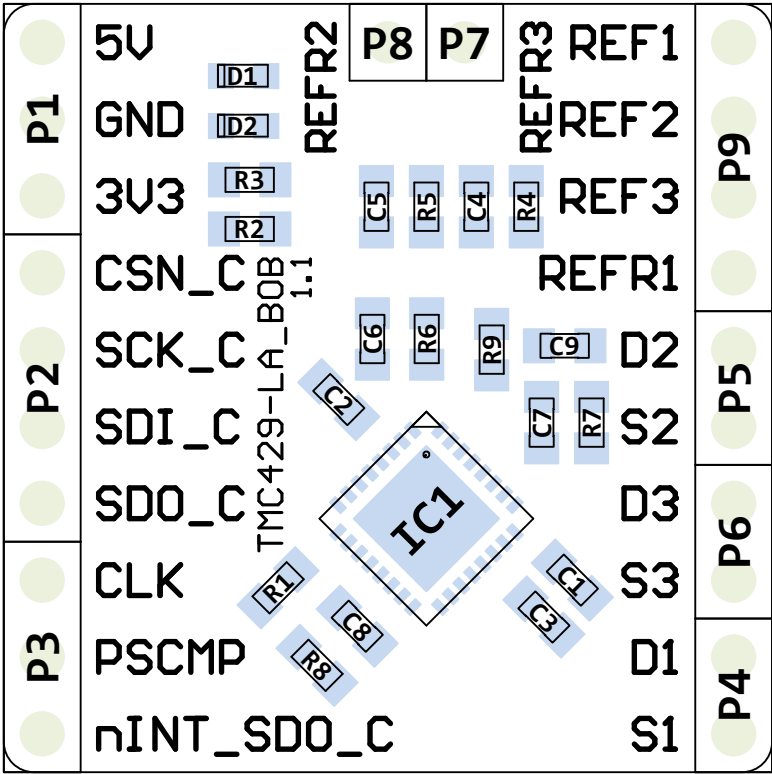
V1.0 - Initial design

V1.1 - Redesign and Optimization after 1st Round

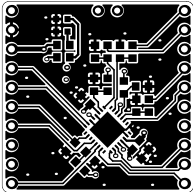
- + Left side connector: Pin 1 - 5V, Pin 2 - GND, Pin 3 - 3V3
- + Bottom side labels (IC Name, supply range):
TMC429-LA, VCC = 3.3...5V
- + Changed silkscreen text width from 5mil to 7mil.
- + Changed board name text height to 35mil.

Title			TMC429-LA_BOB		
Size	Number			Revision	
A4				1.1	
Date:	15.08.2017			Sheet	of
File:	C:\Users\...\ChangeLog.SchDoc			Drawn By:	

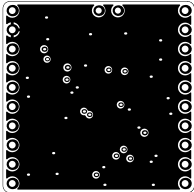
View from Top side (Scale 4:1)



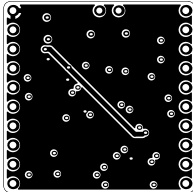
Top (Scale 1:1)



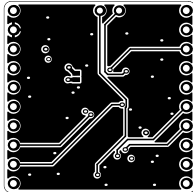
GND (Scale 1:1)



SPLY (Scale 1:1)



Bottom (Scale 1:1)



BOM

Project: TMC429-LA_BOB

Version: 1.1

Date: 15.08.2017

#	Quantity	MPN	Comment	Designator	Footprint	Description	Note	MF
1	1	MC0603X474K160CT	470nF/16V/10%	C1	C0603	Ceramic capacitor		Multicomp
2	2	MC0603B104K160CT	100nF/16V/10%	C2, C3	C0603	Ceramic capacitor		Multicomp
3	6	MC0603B103K160CT	10nF/16V/10%	C4, C5, C6, C7, C8, C9	C0603	Ceramic capacitor		Multicomp
4	2	LTST-C191TBKT-5A	LED, Blue, SMD, 20mA, 2.8V, 465 nm	D1, D2	LED_0603	LED, Blue, SMD, 20mA, 2.8V, 465 nm		Lite-On
5	1	TMC429-LI	TMC429-LI	IC1	TMC429_QFN32_0.5_5.0X5.0	Intelligent Triple Stepper Motor Controller with SPI, Step/Dir, QFN32(5x5)		TRINAMIC
6	1	MC0063W0603110K	10k	R1	R0603	10 kohm, 50 V, 0603 [1608 Metric], 63 mW, ± 1%, MC Series		MULTICOMP
7	2	MC0063W060311K	1k	R2, R3	R0603	1 kohm, 50 V, 0603 [1608 Metric], 63 mW, ± 1%, MC Series		MULTICOMP
8	6	MC0063W060314K7	4k7	R4, R5, R6, R7, R8, R9	R0603	4.7 kohm, 50 V, 0603 [1608 Metric], 63 mW, ± 1%, MC Series		MULTICOMP

Approved	Notes	31
----------	-------	----

--	--

