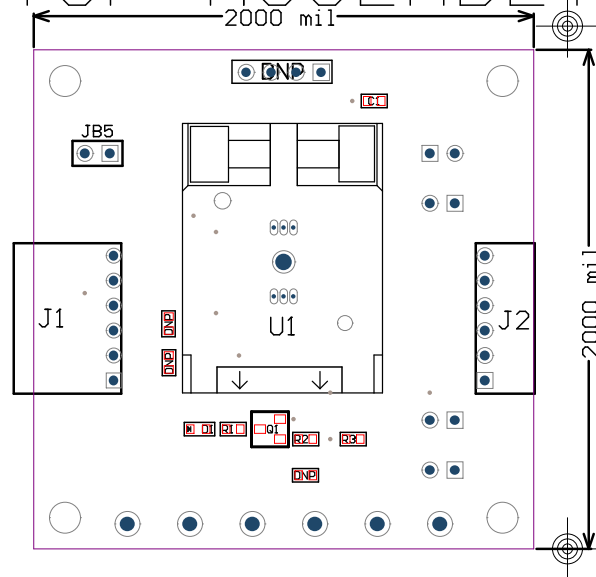


TOP ASSEMBLY

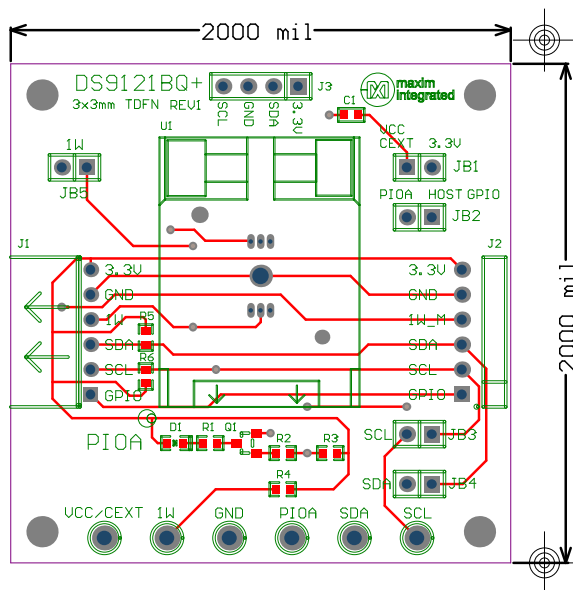


DS9121BQ+	
Part Number: 89-9121B+Q00	
Property of	Rev
maxim integrated™	1
Drill and Mechanical Layer	
Date: FEB 28 2018	Units in mils

SIZE	QTY	SYM	PLATED	TOLERANCE
18	16	*	YES	+/- 0.003
39	26		YES	+/- 0.003
59	6		YES	+/- 0.003
59	1		NO	+/- 0.003
67	1		NO	+/- 0.003
67	1		YES	+/- 0.003
125	4		NO	+/- 0.003

Notes:

- N/A
- Material: RoHS Compliant FR-408 or similar laminate material
- Board Dimensions: (2000 x 2000 mils)
- Board Thickness: 62 mils +/- 10%
- Layers: 2 (Top, Bottom)
- Minimum Trace/Spacing: 10mil / 7mil
- Copper Thickness: 1oz on all layers
- Surface mount pads: 19 Through Hole Pads: 39 Nonplated through holes: 6
- Soldermask: GREEN
- Legend: White, top side only
- Plating: Must be Lead free and RoHS Compliant
- Finish: Most Economical Lead free and RoHS compliant process
- Vendor Logo & date code: Allowed on bottom side only
- Through holes: quantity 55, Slot holes 0, minimum size 18 mil
- Tolerances:
 - Plated-through holes +/- 3 mil
 - Pattern to pattern +/- 6 mil
 - Legend to legend no preference
 - Soldermask to pattern +/- 6 mil
- Electrical testing needed: YES



DS9121BQ+	
Part Number: 89-9121B+Q00	
Property of	Rev
maxim integrated™	1
Drill and Mechanical Layer	
Date: FEB 28 2018	Units in mils

SIZE	QTY	SYM	PLATED	TOLERANCE
18	16	*	YES	+/- 0.003
39	26		YES	+/- 0.003
59	6		YES	+/- 0.003
59	1		NO	+/- 0.003
67	1		NO	+/- 0.003
67	1		YES	+/- 0.003
125	4		NO	+/- 0.003

Notes:

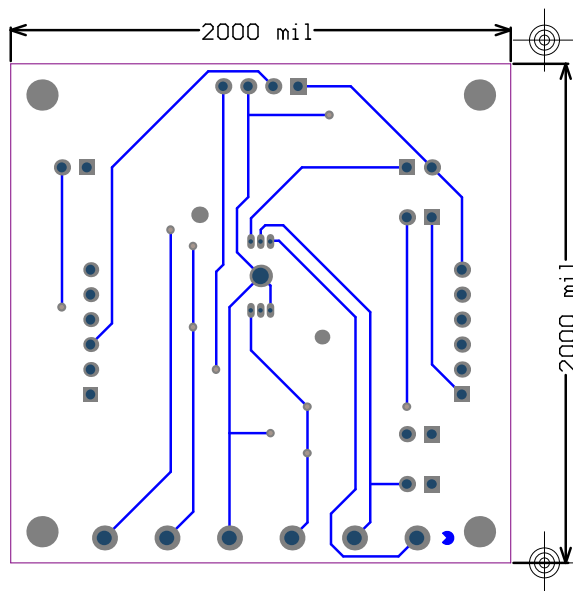
- N/A
- Material: RoHS Compliant FR-408 or similar laminate material
- Board Dimensions: (2000 x 2000 mils)
- Board Thickness: 62 mils +/- 10%
- Layers: 2 (Top, Bottom)
- Minimum Trace/Spacing: 10mil / 7mil
- Copper Thickness: 1oz on all layers
- Surface mount pads: 19 Through Hole Pads: 39 Nonplated through holes: 6
- Soldermask: GREEN
- Legend: White, top side only
- Plating: Must be Lead free and RoHS Compliant
- Finish: Most Economical Lead free and RoHS compliant process
- Vendor Logo & date code: Allowed on bottom side only
- Through holes: quantity 55, Slot holes 0, minimum size 18 mil
- Tolerances:


Plated-through holes	+/- 3 mil
Pattern to pattern	+/- 6 mil
Legend to legend	no preference
Soldermask to pattern	+/- 6 mil
- Electrical testing needed: YES

Top Silk Screen

TOP METAL

62mil PCB



DS9121BQ+	
Part Number: 89-9121B+Q00	
Property of	Rev
 maxim integrated™	1
Drill and Mechanical Layer	
Date:FEB 28 2018	Units in mils

SIZE	QTY	SYM	PLATED	TOLERANCE
18	16	*	YES	+/- 0.003
39	26		YES	+/- 0.003
59	6		YES	+/- 0.003
59	1		NO	+/- 0.003
67	1		NO	+/- 0.003
67	1		YES	+/- 0.003
125	4		NO	+/- 0.003

Notes:

1. N/A
2. Material: RoHS Compliant FR-408 or similar laminate material
3. Board Dimensions: (2000 x 2000 mils)
4. Board Thickness: 62 mils +/- 10%
5. Layers: 2 (Top, Bottom)
6. Minimum Trace/Spacing: 10mil / 7mil
7. Copper Thickness: 1oz on all layers
8. Surface mount pads:19 Through Hole Pads:39 Nonplated through holes:6
9. Soldermask: GREEN
10. Legend: White. top side only
11. Plating: Must be Lead free and RoHS Compliant
12. Finish: Most Economical Lead free and RoHS compliant process
13. Vendor Logo & date code: Allowed on bottom side only
14. Through holes: quantity 55, Slot holes 0, minimum size 18 mil
15. Tolerances:

Plated-through holes	+/- 3 mil
Pattern to pattern	+/- 6 mil
Legend to legend	no preference
Soldermask to pattern	+/- 6 mil
16. Electrical testing needed: YES

62mil PCB

Bottom Metal

Bottom Metal