

DS28E18EUKit MAX31722 SPI Module

Part Number: ???

Property of



Rev

A

Drill and Mechanical Layer

Date: MAR 03 2020 Units in mil

SIZE	QTY	SYM	PLATED	TOLERANCE
12	3		YES	0.003 in
39	28		YES	0.003 in

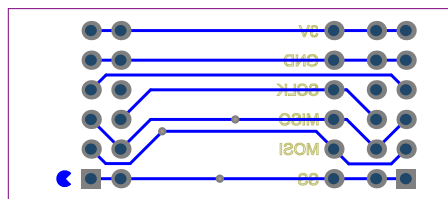
Notes:

1. Material: RoHS Compliant FR-4 or similar laminate material
2. Board Dimensions: 1500 x 650 mils
3. Board Thickness: 62 mil
4. Layers: 2 (Top, Bottom)
5. Minimum Trace spacing 6mil - Trace width: 10 mil
6. Copper Thickness: 1 oz on all layers
7. Surface mount pads: 18
8. Soldermask: GREEN
9. Legend: white Top and Bottom layers
10. Plating: Best plating option for lead free
11. Finish: Best finish option for lead free
12. Vendor Logo & date code: Allowed on bottom side only
13. Through holes: quantity 31, minimum size 12 mil
14. Tolerances:
 - Plated-through holes +/- 0.003 in
 - Pattern to pattern +/- 0.003 in
 - Legend to legend +/- no preference
 - Soldermask to pattern +/- 0.003 in
15. Electrical testing needed

TOP Overlay

TOP METAL

62 mil thick PCB



DS28E18EUKit MAX31722 SPI Module

Part Number: ???

Property of



Rev

A

Drill and Mechanical Layer

Date: MAR 03 2020 Units in mil

SIZE	QTY	SYM	PLATED	TOLERANCE
12	3		YES	0.003 in
39	28		YES	0.003 in

Notes:

1. Material: RoHS Compliant FR-4 or similar laminate material
2. Board Dimensions: 1500 x 650 mils
3. Board Thickness: 62 mil
4. Layers: 2 (Top, Bottom)
5. Minimum Trace spacing 6mil - Trace width: 10 mil
6. Copper Thickness: 1 oz on all layers
7. Surface mount pads: 18
8. Soldermask: GREEN
9. Legend: white Top and Bottom layers
10. Plating: Best plating option for lead free
11. Finish: Best finish option for lead free
12. Vendor Logo & date code: Allowed on bottom side only
13. Through holes: quantity 31, minimum size 12 mil
14. Tolerances:
 - Plated-through holes +/- 0.003 in
 - Pattern to pattern +/- 0.003 in
 - Legend to legend +/- no preference
 - Soldermask to pattern +/- 0.003 in
15. Electrical testing needed

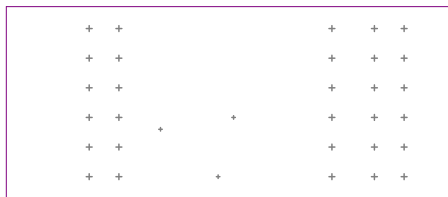
Bottom Metal


Bottom Metal

Bottom Overlay

Bottom Overlay

62 mil thick PCB



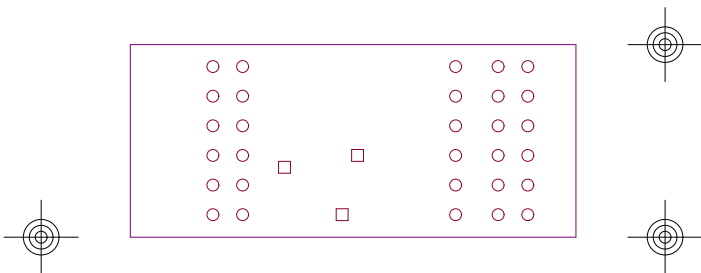
DS28E18EUKit MAX31722 SPI Module	
Part Number: ???	
Property of	Rev
 maxim integrated™	A
Drill and Mechanical Layer	
Date: MAR 03 2020	Units in mil


SIZE	QTY	SYM	PLATED	TOLERANCE
12	3	.	YES	0.003 in
39	28	+	YES	0.003 in

Notes:

1. Material: RoHS Compliant FR-4 or similar laminate material
2. Board Dimensions: 1500 x 650 mils
3. Board Thickness: 62 mil
4. Layers: 2 (Top, Bottom)
5. Minimum Trace spacing 6mil - Trace width: 10 mil
6. Copper Thickness: 1 oz on all layers
7. Surface mount pads: 18
8. Soldermask: GREEN
9. Legend: white Top and Bottom layers
10. Plating: Best plating option for lead free
11. Finish: Best finish option for lead free
12. Vendor Logo & date code: Allowed on bottom side only
13. Through holes: quantity 31, minimum size 12 mil
14. Tolerances:
 - Plated-through holes +/- 0.003 in
 - Pattern to pattern +/- 0.003 in
 - Legend to legend +/- no preference
 - Soldermask to pattern +/- 0.003 in
15. Electrical testing needed

 62 mil thick PCB



DS28E18EUKit MAX31722 SPI Module	
Part Number: ???	
Property of	Rev
 maxim integrated™	A
Drill and Mechanical Layer	
Date: MAR 03 2020	Units in mil

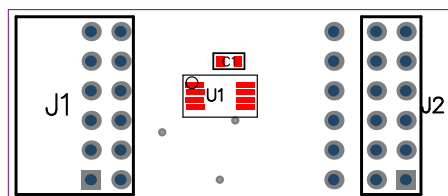
SIZE	QTY	SYM	PLATED	TOLERANCE
12	3	□	YES	0.003 in
39	28	○	YES	0.003 in

Notes:


1. Material: RoHS Compliant FR-4 or similar laminate material
2. Board Dimensions: 1500 x 650 mils
3. Board Thickness: 62 mil
4. Layers: 2 (Top, Bottom)
5. Minimum Trace spacing 6mil - Trace width: 10 mil
6. Copper Thickness: 1 oz on all layers
7. Surface mount pads: 18
8. Soldermask: GREEN
9. Legend: white Top and Bottom layers
10. Plating: Best plating option for lead free
11. Finish: Best finish option for lead free
12. Vendor Logo & date code: Allowed on bottom side only
13. Through holes: quantity 31, minimum size 12 mil
14. Tolerances:
 - Plated-through holes +/- 0.003 in
 - Pattern to pattern +/- 0.003 in
 - Legend to legend +/- no preference
 - Soldermask to pattern +/- 0.003 in
15. Electrical testing needed

62 mil thick PCB

Top Assembly Information



DS28E18EUKit MAX31722 SPI Module

Part Number: ???	
Property of	Rev
 maxim integrated™	A
Drill and Mechanical Layer	
Date: MAR 03 2020	Units in mil

SIZE	QTY	SYM	PLATED	TOLERANCE
12	3		YES	0.003 in
39	28		YES	0.003 in

Notes:

1. Material: RoHS Compliant FR-4 or similar laminate material
2. Board Dimensions: 1500 x 650 mils
3. Board Thickness: 62 mil
4. Layers: 2 (Top, Bottom)
5. Minimum Trace spacing 6mil - Trace width: 10 mil
6. Copper Thickness: 1 oz on all layers
7. Surface mount pads: 18
8. Soldermask: GREEN
9. Legend: white Top and Bottom layers
10. Plating: Best plating option for lead free
11. Finish: Best finish option for lead free
12. Vendor Logo & date code: Allowed on bottom side only
13. Through holes: quantity 31, minimum size 12 mil
14. Tolerances:
 - Plated-through holes +/- 0.003 in
 - Pattern to pattern +/- 0.003 in
 - Legend to legend +/- no preference
 - Soldermask to pattern +/- 0.003 in
15. Electrical testing needed

TOP METAL

62 mil thick PCB