
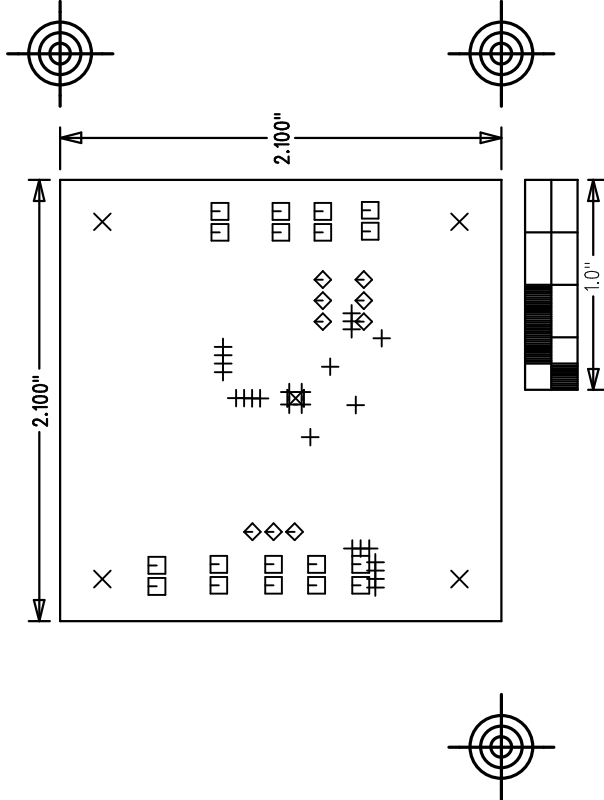


MAX17505B-5V OUTPUT EVKIT	
P/N: EPCB17505B	REV A
 maxim integrated™	
LAYER	DRILL & MECHANICALS
DATE:	ALL UNITS ARE IN 0.001"



SIZE	QTY	SYM	PLATED	TOL
0.015	26	+	YES	+/-0.003"
0.125	4	X	YES	+/-0.003"
0.04	18	□	YES	+/-0.003"
0.037	9	◇	YES	+/-0.003"
0.035	1	⊗	YES	+/-0.003"

NOTES: UNLESS OTHERWISE SPECIFIED

- FABRICATE USING PROVIDED GERBER FILES PER LATEST REVISION OF IPC-A-600 UNLESS OTHERWISE NOTED.
- MATERIAL: RoHS COMPLIANT FR-408 OR SIMILAR LAMINATE MATERIAL WITH Tg>=170 AND COMPATIBLE WITH LEAD-FREE SOLDERING PROCESS.
- BOARD DIMENSIONS: 2.10"x2.10" +/- 0.010".
BOARD THICKNESS: 0.062"
- LAYERS: 4, SEE LAYER STACK UP
- MINIMUM TRACE/SPACING: 10MILS/8MILS.
- COPPER CLAD FINISH: 1oz MINIMUM ON ALL LAYERS.
- SURFACE MOUNT PADS: 50.
- SOLDERMASK: GREEN LPI SMOBC.
- LEGENDS: WHITE, SINGLE-SIDED, NON-CONDUCTIVE EPOXY INK OR EQUIVALENT.
CLIPPED ALL LEGENDS FROM EXPOSED METAL.
- PLATING: MUST BE LEAD FREE AND RoHS COMPLIANT.
- FINISH: VENDOR SHOULD USE THE MOST ECONOMICAL LEAD FREE AND RoHS COMPLIANT PROCESS AVAILABLE OR AS SPECIFIED IN PURCHASE ORDER.
- APPROVED FINISH:
HASL LEAD-FREE
IMMERSION TIN
IMMERSION GOLD
- PUT VENDOR LOGO & DATE CODE IN INK ON BOTTOM SIDE ONLY. DATE CODE FORMAT MUST BE YYWW ONLY
- THRU HOLES: 0.001" MIN.
- TOLERANCES:
PLATED-THRU HOLES: +/-0.003"
PATTERN-TO-PATTERN: +/-0.005"
LEGEND TO LEGEND: +/-0.007"
SOLDERMASK TO PATTERN: +/-0.005"

LAYER 1	1.4MIL
LAYER 2 SGNB	PRE-PREG Er=3.8 AS NEEDED
LAYER 3 SGNB	CORE AS NEEDED Er=3.8
LAYER 4	PRE-PREG Er=3.8 AS NEEDED

ALL DIMENSION IN MIL (0.001 INCH) UNLESS OTHERWISE SPECIFIED.
N/A - NOT AVAILABLE. DO NOT ROUTE TRACES OF THIS TYPE ON THE INDICATE LAYERS.