
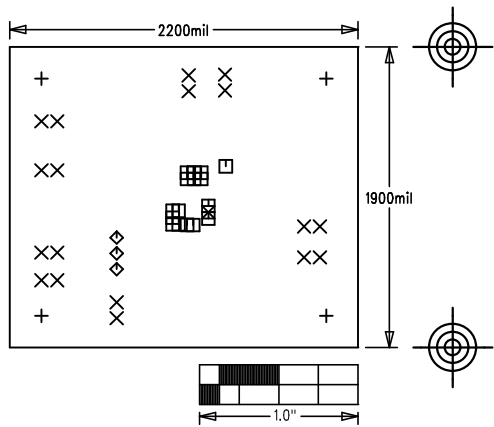


MAX17541GTA EVKIT		REV A
PROPERTY OF		
 maxim integrated™		
LAYER DRILL & MECHANICALS		
DATE:	ALL UNITS ARE IN 0.001"	

NOTES: UNLESS OTHERWISE SPECIFIED

1. FABRICATE USING PROVIDED GERBER FILES PER LATEST REVISION OF IPC-A-600 UNLESS OTHERWISE NOTED.
2. MATERIAL: RoHS COMPLIANT FR-408 OR SIMILAR LAMINATE MATERIAL WITH $T_g \geq 170$ AND COMPATIBLE WITH LEAD-FREE SOLDERING PROCESS.
3. BOARD DIMENSIONS: 2.20"x1.90" +/- 0.010".
BOARD THICKNESS: 0.062"
4. LAYERS: 2.
5. MINIMUM TRACE/SPACING: 10 MILS/8MILS
6. COPPER CLAD FINISH: 1oz MINIMUM ON ALL LAYERS.
7. SURFACE MOUNT PADS: 43.
8. SOLDERMASK: GREEN LPI SMOBC.
9. LEGENDS: WHITE. SINGLE-SIDED. NON-CONDUCTIVE EPOXY INK OR EQUIVALENT.
CLIPPED ALL LEGENDS FROM EXPOSED METAL.
10. PLATING: MUST BE LEAD FREE AND RoHS COMPLIANT.
11. FINISH: VENDOR SHOULD USE THE MOST ECONOMICAL LEAD FREE AND RoHS COMPLIANT PROCESS AVAILABLE OR AS SPECIFIED IN PURCHASE ORDER.
APPROVED FINISH:
HASL LEAD-FREE
IMMERSION TIN
IMMERSION GOLD
12. REQUIRED VENDOR LOGO & DATE CODE IN INK ON BOTTOM SIDE ONLY. DATE CODE FORMAT MUST BE YYWW ONLY.
13. THRU HOLES: 0.001" MIN.
14. TOLERANCES:
PLATED-THRU HOLES: +/-0.003"
PATTERN-TO-PATTERN: +/-0.005"
LEGEND TO LEGEND: +/-0.007"
SOLDERMASK TO PATTERN: +/-0.005"



SIZE	QTY	SYM	PLATED	TOL
125	4	+	YES	+/-3
40	18	X	YES	+/-3
15	16	□	YES	+/-3
37	3	◇	YES	+/-3
20	1	⊠	YES	+/-3