
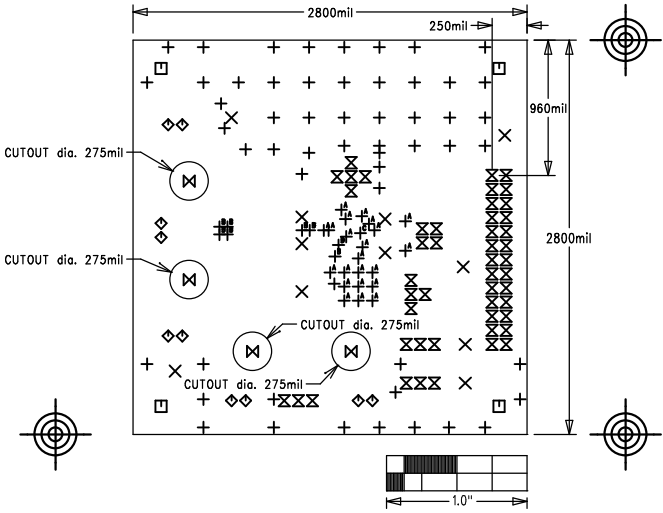


MAX98358 TQFN DEV EVKIT	
P/N: EPCB98358DEVTTQFN	REV A
	
LAYER DRILL & MECHANICALS	
DATE:	ALL UNITS ARE IN 0.001"



SIZE	QTY	SYM	PLATED	TOL
15	55	+	YES	+/-3
67	11	X	YES	+/-3
125	4	□	YES	+/-3
40	10	◇	YES	+/-3
37	48	⊗	YES	+/-3
275	4	⊠	YES	+/-3
10	22	+ ^A	YES	+/-3
25	8	+ ^B	YES	+/-3
20	1	+ ^C	YES	+/-3

NOTES: UNLESS OTHERWISE SPECIFIED

- FABRICATE USING PROVIDED GERBER FILES PER LATEST REVISION OF IPC-A-600 UNLESS OTHERWISE NOTED.
- MATERIAL: RoHS COMPLIANT FR-408 OR SIMILAR LAMINATE MATERIAL WITH $T_g \geq 170$ AND COMPATIBLE WITH LEAD-FREE SOLDERING PROCESS.
- BOARD DIMENSIONS: 2.80" X 2.80"
BOARD THICKNESS: 0.062"
- LAYERS: 4. SEE LAYER STACKUP CHART.
- MINIMUM TRACE/SPACING: 8MILS/8MILS
- COPPER CLAD FINISH: 1oz ON ALL LAYERS
- SURFACE MOUNT PADS: 65
- SOLDERMASK: GREEN LPI SMOBC.
- LEGENDS: WHITE, SINGLE-SIDED, NON-CONDUCTIVE EPOXY INK OR EQUIVALENT. CLIPPED ALL LEGENDS FROM EXPOSED METAL.
- PLATING: MUST BE LEAD FREE AND RoHS COMPLIANT.
- FINISH: VENDOR SHOULD USE THE MOST ECONOMICAL LEAD FREE AND RoHS COMPLIANT PROCESS AVAILABLE OR AS SPECIFIED IN PURCHASE ORDER.
APPROVED FINISH:
HASL LEAD-FREE
IMMERSION TIN
IMMERSION GOLD
- PUT VENDOR LOGO & DATE CODE IN INK ON BOTTOM SIDE ONLY. DATE CODE FORMAT MUST BE YYWW ONLY.
- THRU HOLES: 0.001" MIN.
- TOLERANCES:
PLATED-THRU HOLES: ± 0.003 "
PATTERN-TO-PATTERN: ± 0.005 "
LEGEND TO LEGEND: ± 0.007 "
SOLDERMASK TO PATTERN: ± 0.005 "

LAYER 1 TOP	1.4MIL
LAYER 2 GND	1.4MIL
CORE AS NEEDED	
LAYER 3 POWER	1.4MIL
LAYER 4 BOTTOM	1.4MIL

ALL DIMENSION IN MIL (0.001 INCH) UNLESS OTHERWISE SPECIFIED.