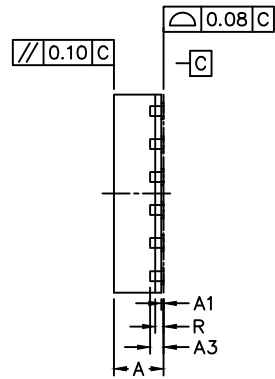
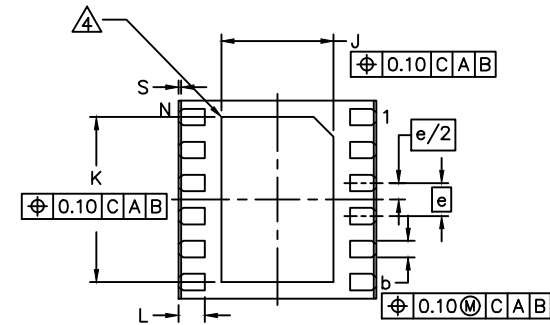


TOP VIEW



SIDE VIEW



BOTTOM VIEW

NOTES:

1. ALL DIMENSION AND TOLERANCE CONFORM TO ASME Y14.5M-1994.
2. ALL DIMENSION ARE IN MILLIMETERS UNLESS OTHERWISE SPECIFIED.
3. N IS THE TOTAL NUMBER OF TERMINALS.
4. BILATERAL COPLANARITY ZONE APPLIES TO THE EXPOSED PAD AS WELL AS THE TERMINALS.
5. ALL DIMENSION APPLY TO BOTH LEADED (-) AND PbFREE (+) PKG. CODES.
6. DRAWING CONFORMS TO JEDEC MO-220.
7. MARKING SHOWN IS FOR PACKAGE ORIENTATION REFERENCE ONLY.
8. CONTROLLING DIMENSION: mm.
9. PKG. CODE: TD1233Y-2, TD1233Y-2C.

COMMON DIMENSIONS			
DIM	MIN.	NOM.	MAX.
A	0.70	0.75	0.80
A1	0	0.035	0.05
A3	0.203 REF		
b	0.20	0.25	0.30
e	0.50 BSC		
D	3.00 BSC		
E	3.00 BSC		
J	1.60	1.7	1.80
K	2.40	2.5	2.60
L	0.35	0.4	0.45
R	0.075	0.125	0.175
S	0.01	0.0425	0.075
N	12		

-DRAWING NOT TO SCALE-



TITLE:
PACKAGE OUTLINE, 12L, SW TDFN
3X3X0.75mm

APPROVAL
Chuck Xia

DOCUMENT CONTROL NO.
21-100176

REV. 1/1
B