

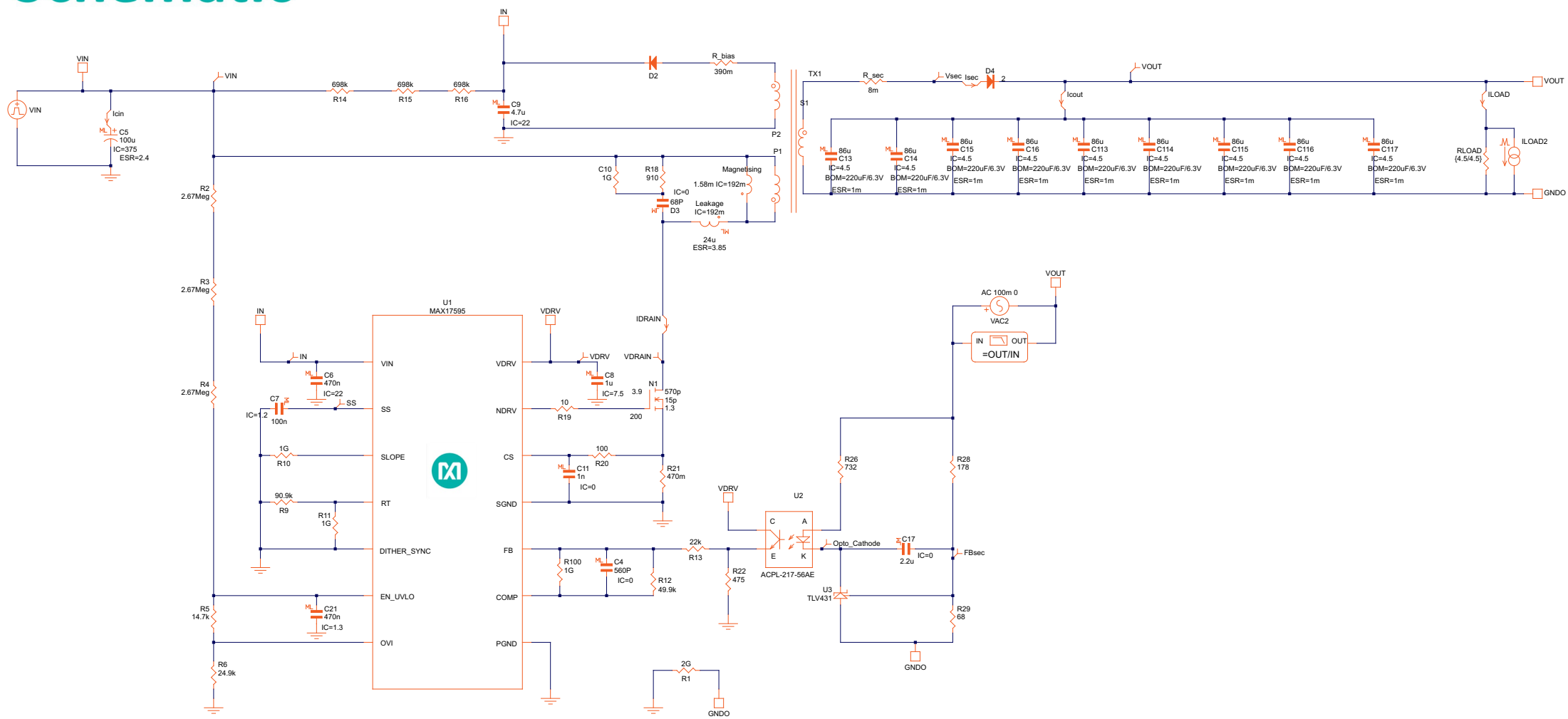
MAXREFDES1036

OASIS Schematic Documentation

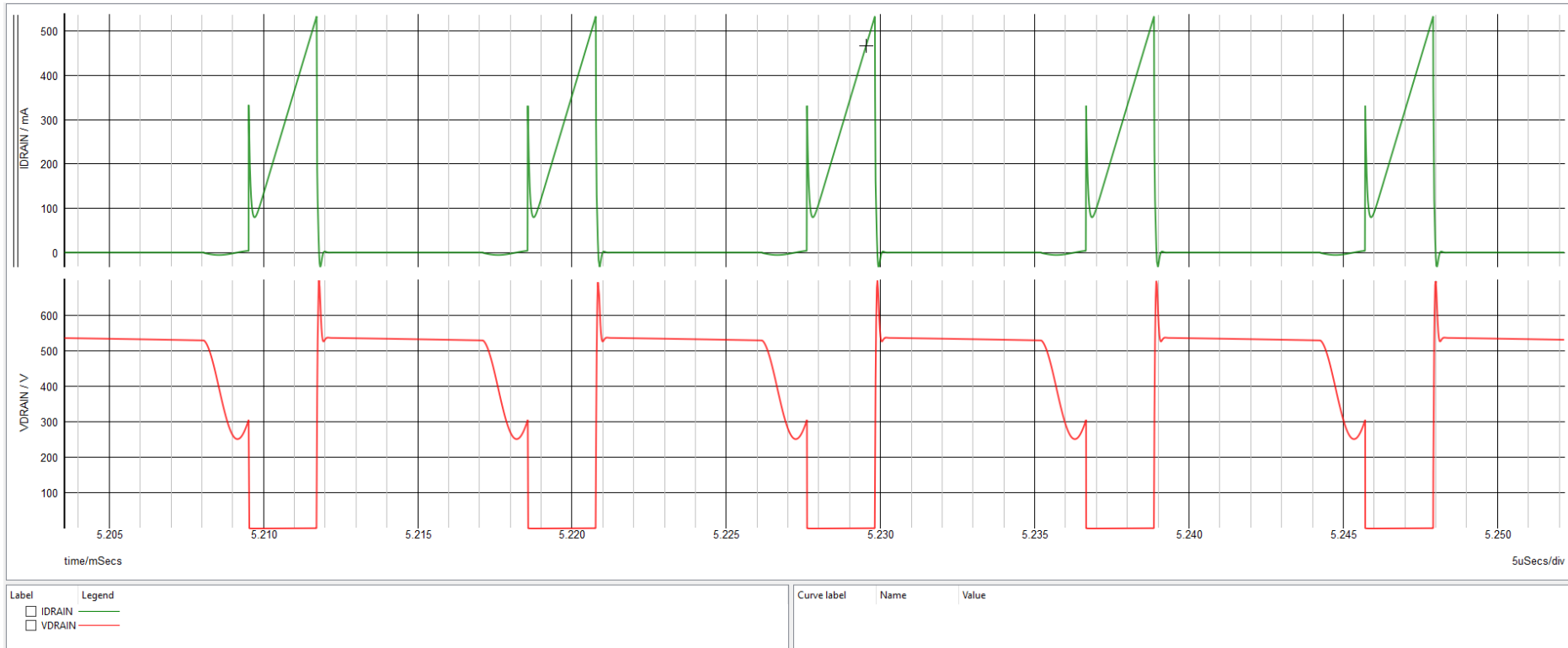
MAXREFDES1036 Design Requirements and Configuration

Primary Specifications	Values	Comments
Part Number:	MAX17595	
Schematic Name:	MAXREFDES1036	
Mode:	Offline Isolated DCM Flyback	
Default Simulation:	Steady-State (POP), AC Loop, Load Step	
Design Requirements:		
Vin(Max):	195VAC	
Vin(Nom):	220VAC	
Vin(Min):	265VAC	
Switching Frequency:	110kHz	
Vout:	4.5V	
Iout:	4.5A	

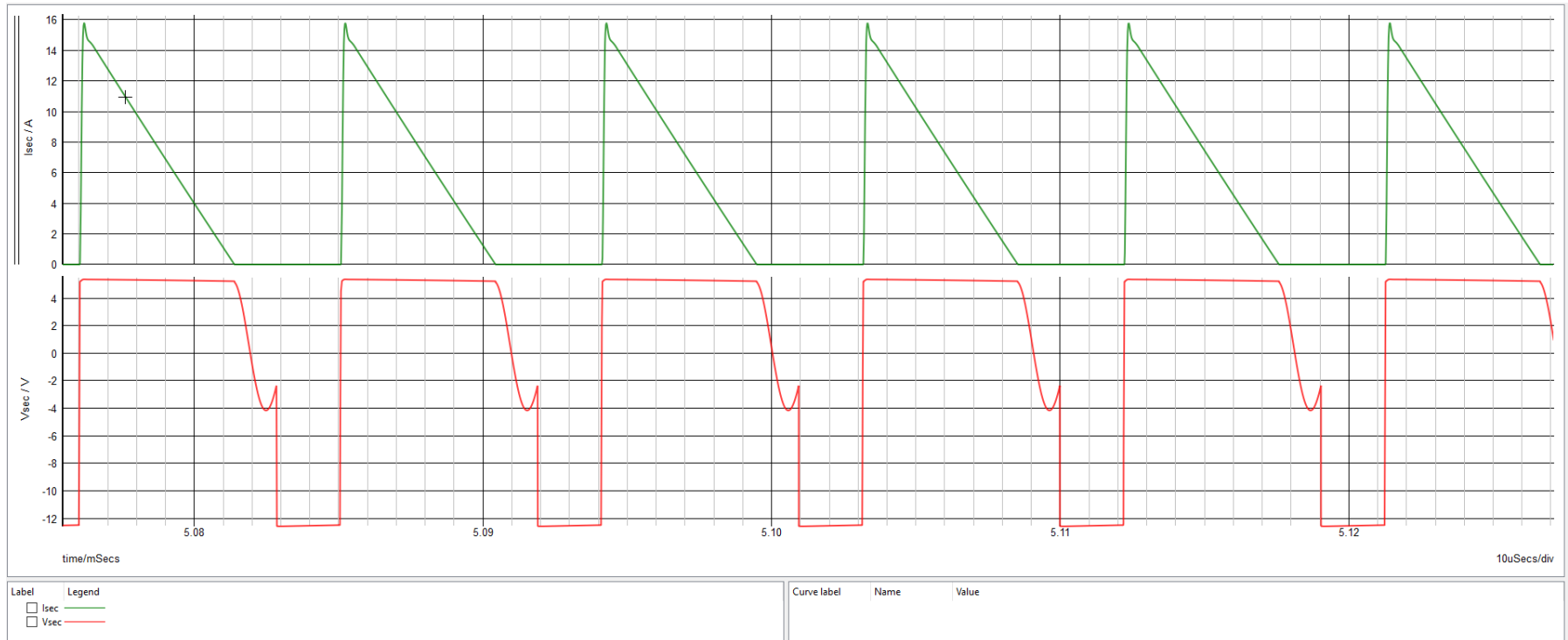
Schematic



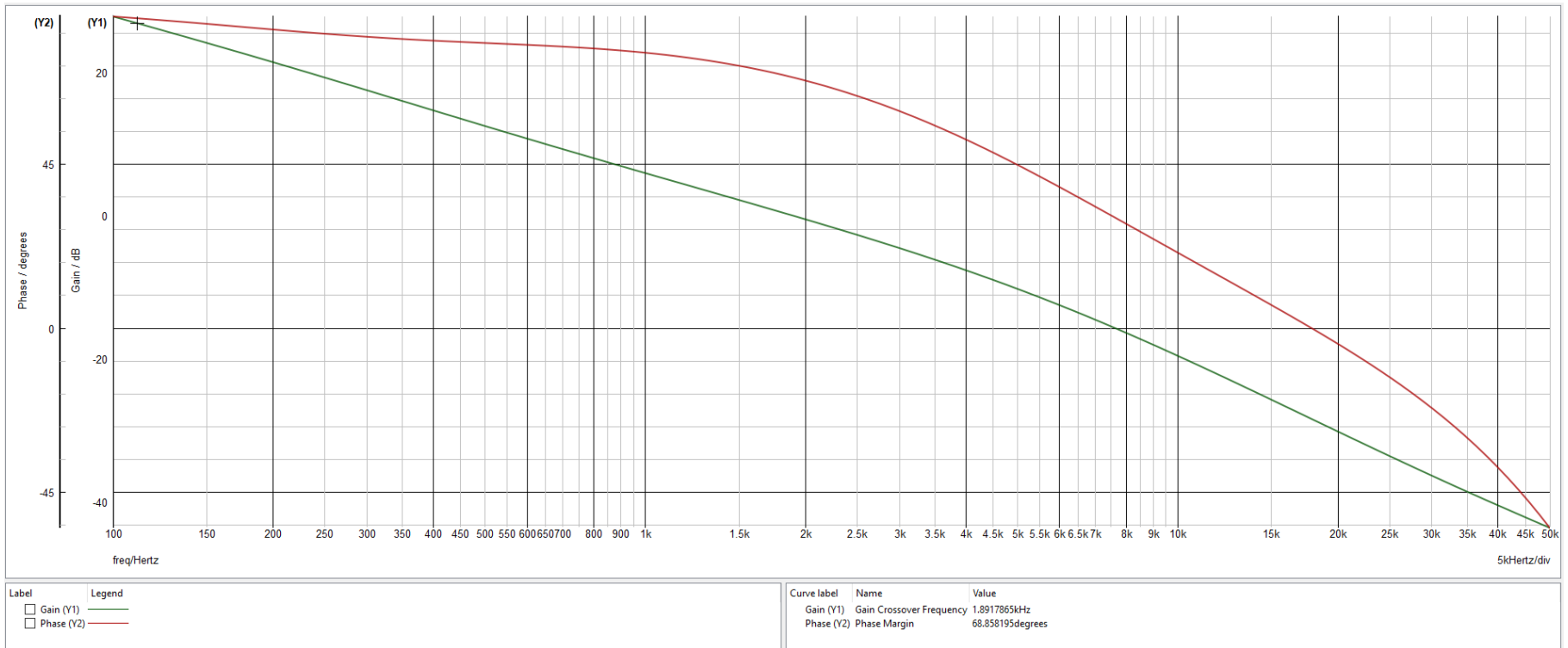
MAXREFDES1036 Primary Switching Waveforms



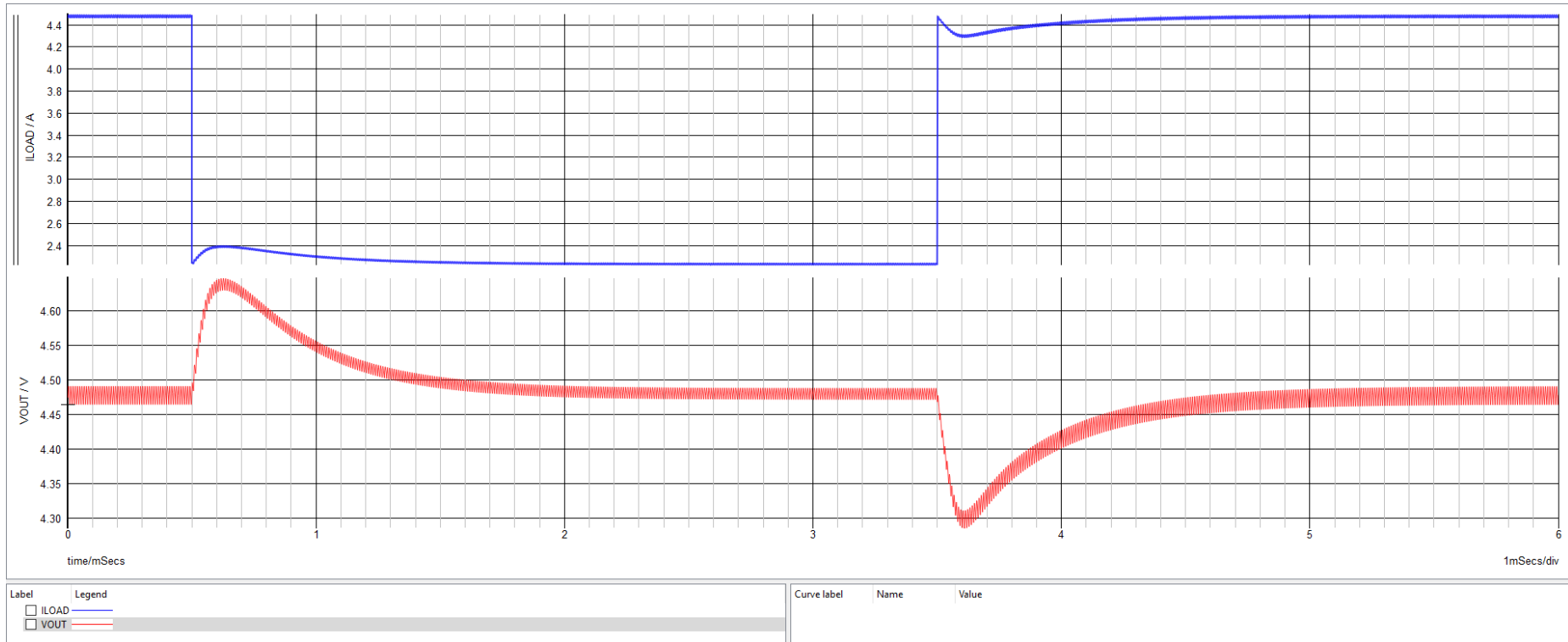
MAXREFDES1036 Secondary Switching Waveforms



MAXREFDES1036 Bode Plot



MAXREFDES1036 Load Step Transient Response



MAXREFDES1036: Startup Waveforms

