

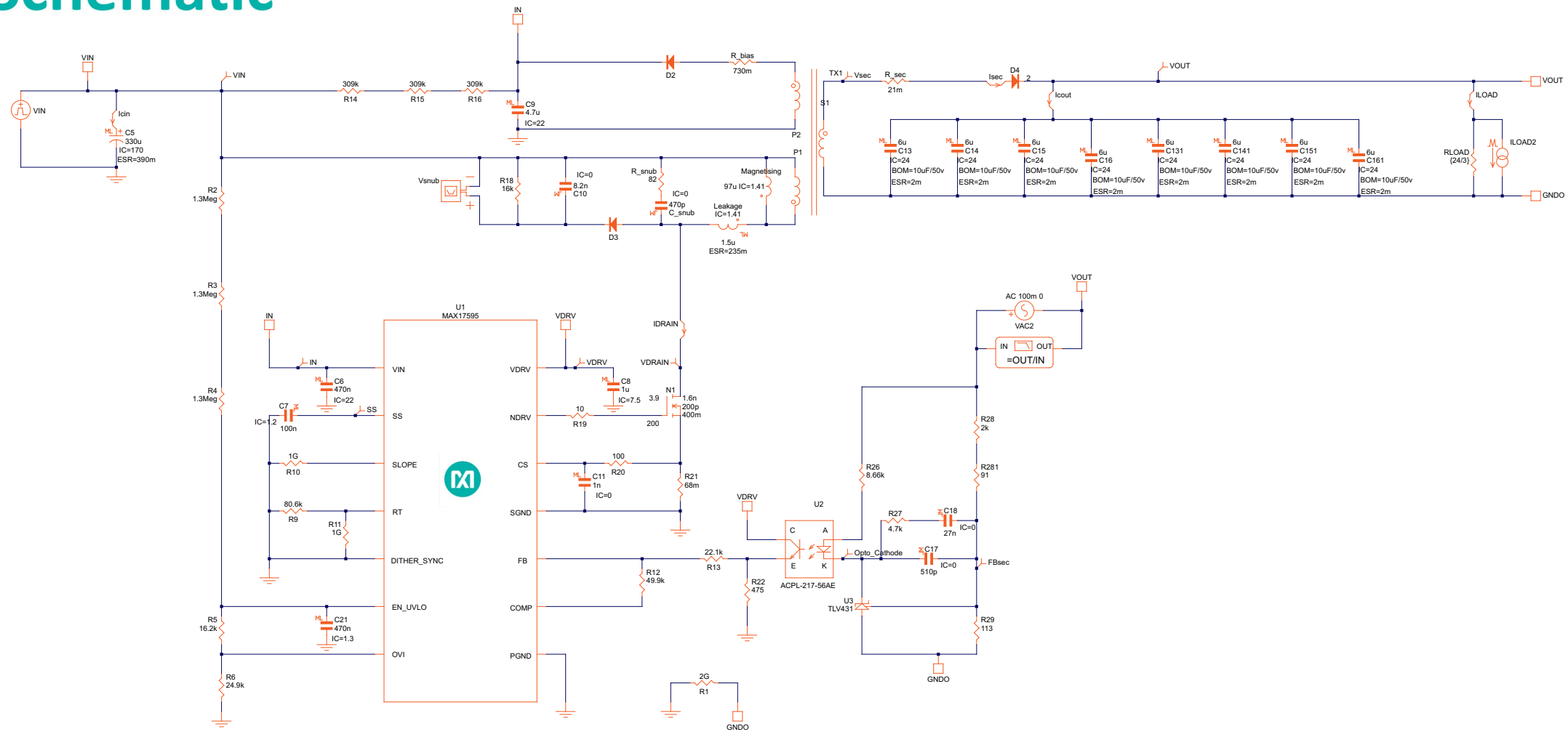
MAXREFDES1037

OASIS Schematic Documentation

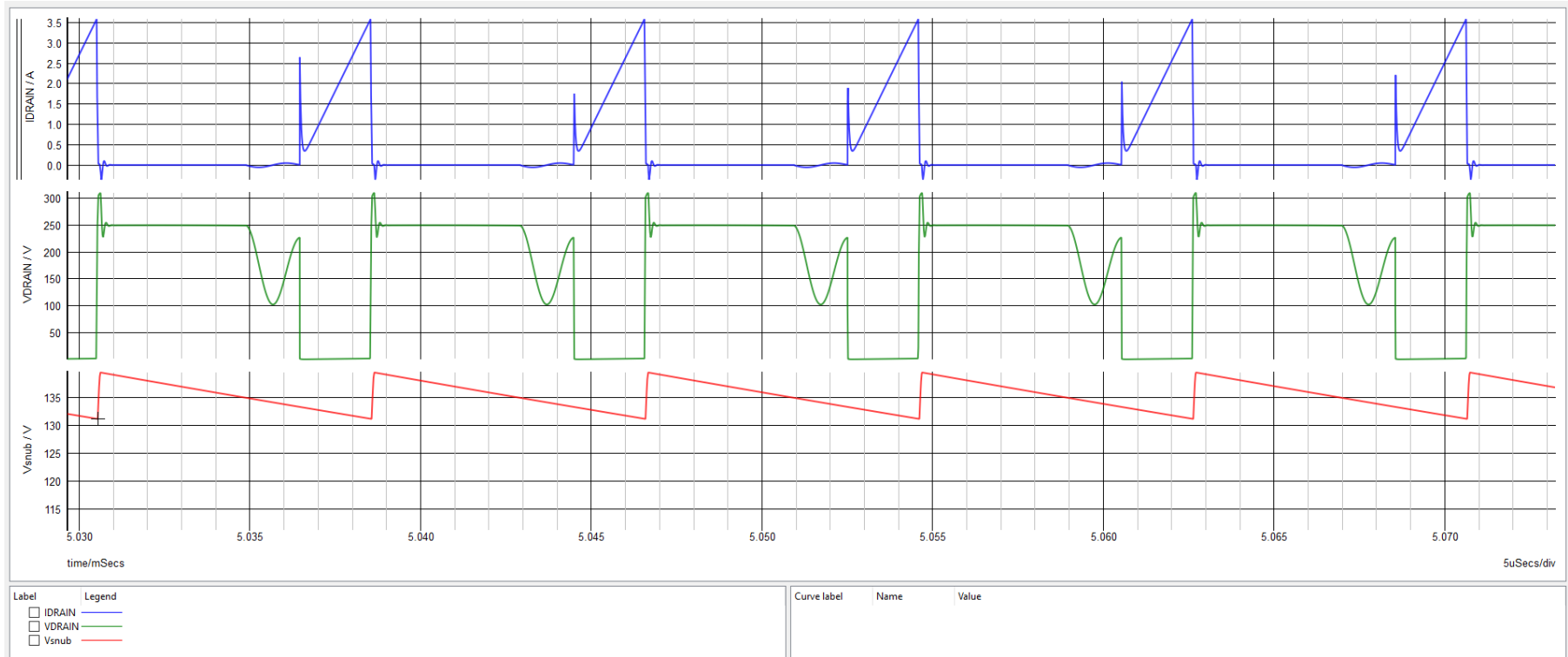
MAXREFDES1037 Design Requirements and Configuration

Primary Specifications	Values	Comments
Part Number:	MAX17595	
Schematic Name:	MAXREFDES1037	
Mode:	Offline Isolated DCM Flyback	
Default Simulation:	Steady-State (POP), AC Loop, Load Step	
Design Requirements:		
Vin(Max):	103VAC	
Vin(Nom):	120VAC	
Vin(Min):	128VAC	
Switching Frequency:	125kHz	
Vout:	24V	
Iout:	3A	

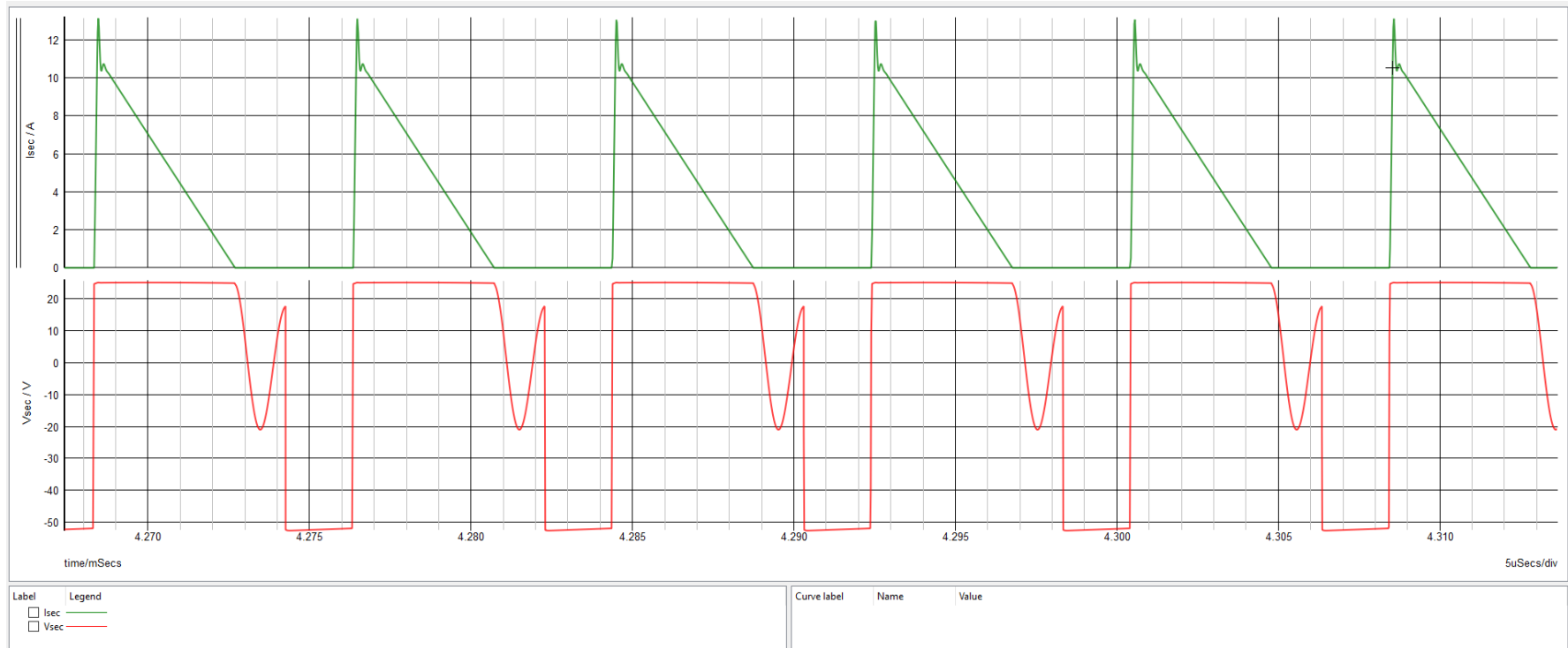
Schematic



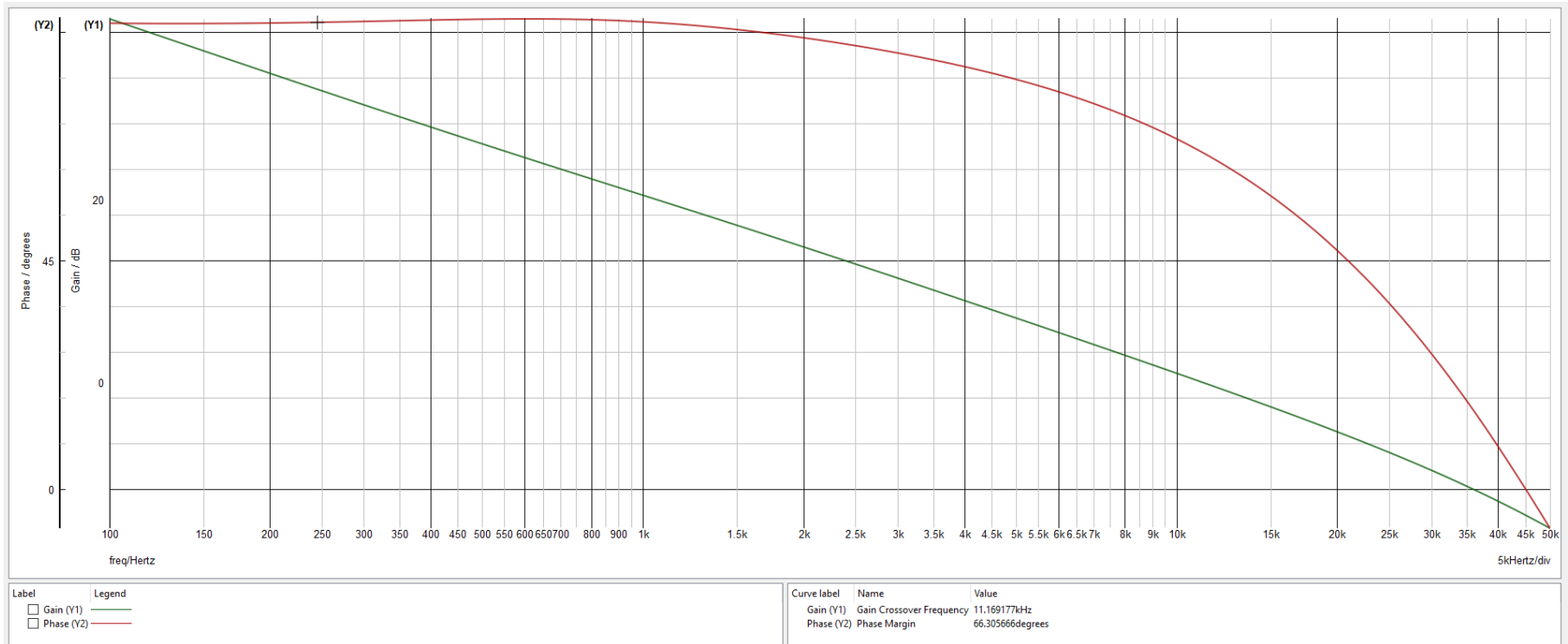
MAXREFDES1037 Primary Switching Waveforms



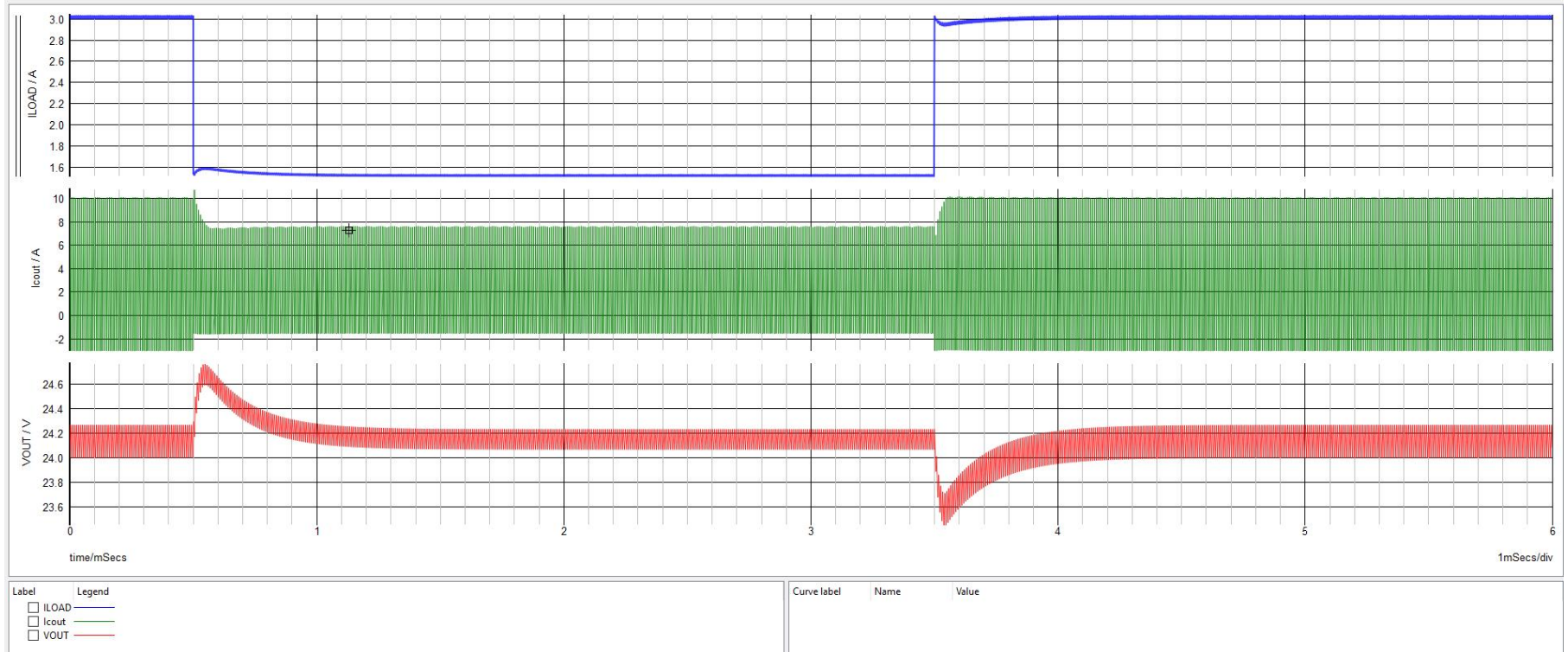
MAXREFDES1037 Secondary Switching Waveforms



MAXREFDES1037 Bode Plot



MAXREFDES1037 Load Step Transient Response



MAXREFDES1037: Startup Waveforms

