

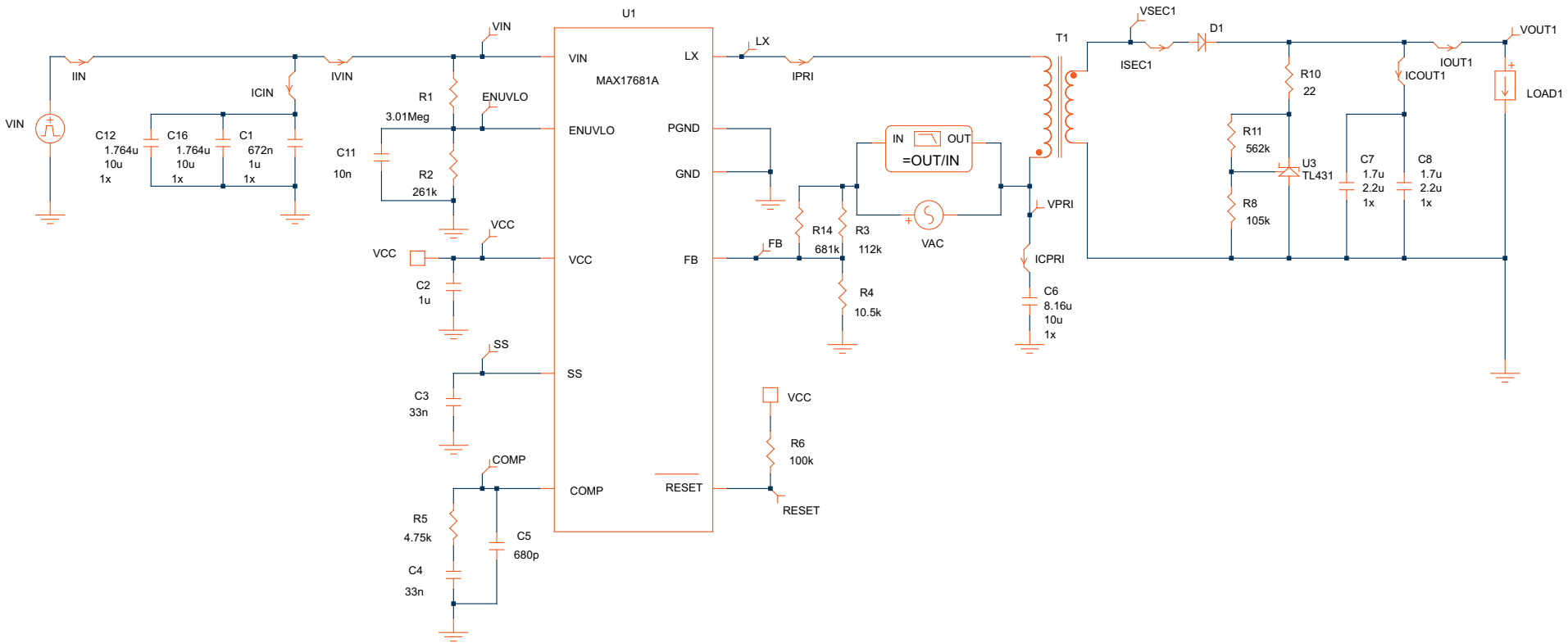
MAXREFDES1167 MAX17681A

EE-Sim® OASIS Schematic Documentation

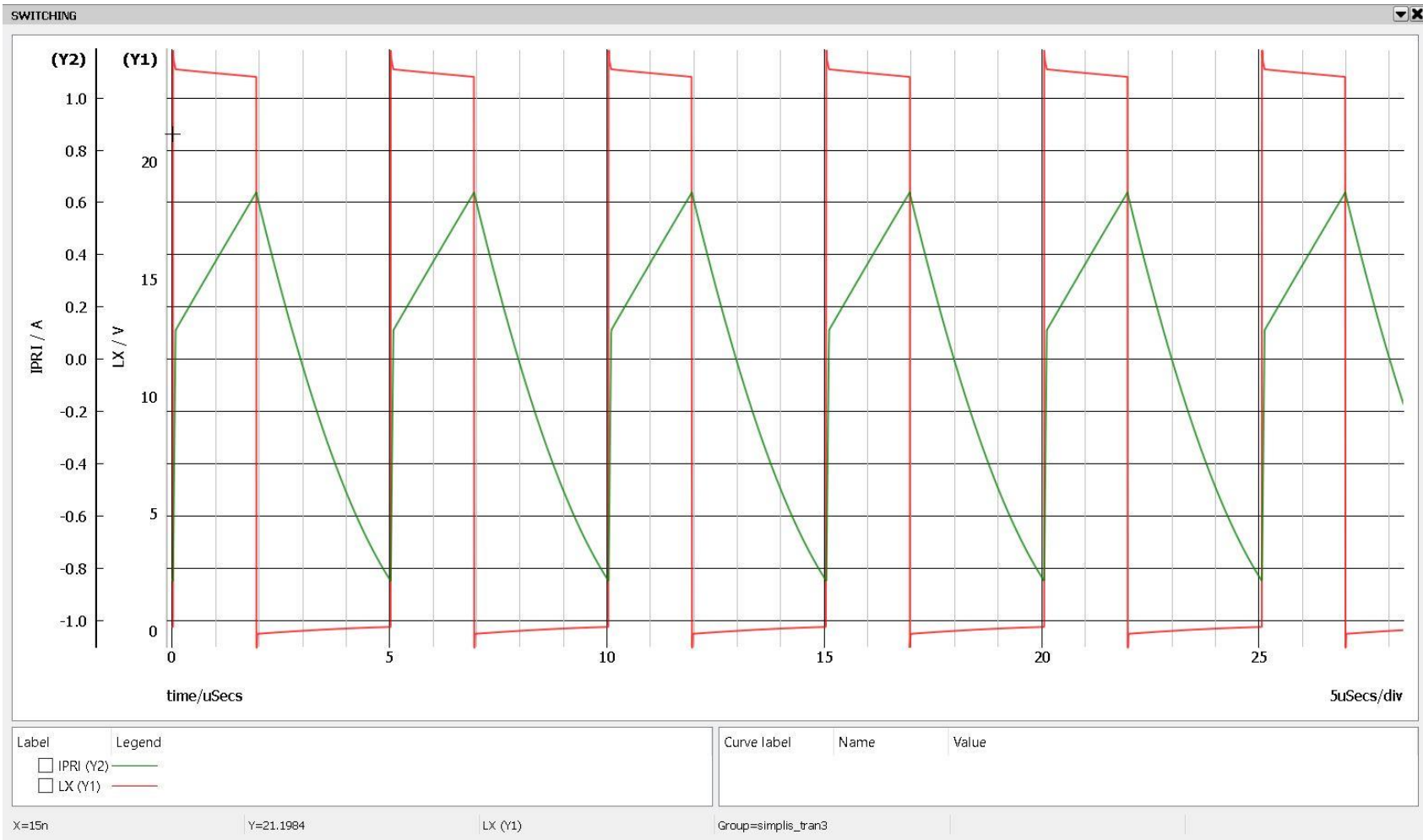
Design Requirements and Configuration

Primary Specifications	Values	Comments
Part Number:	MAX17681A	
Schematic Name:	MAXREFDES1167	
Mode:	FPWM	
Default Simulation:	POP & AC Loop, Load Step	
Design Requirements:		
Vin(Max):	36V	
Vin(Nom):	24V	
Vin(Min):	17V	
Switching Frequency:	200kHz	
Vout:	15V	
Iout:	0.2A	
Other Key Specs		

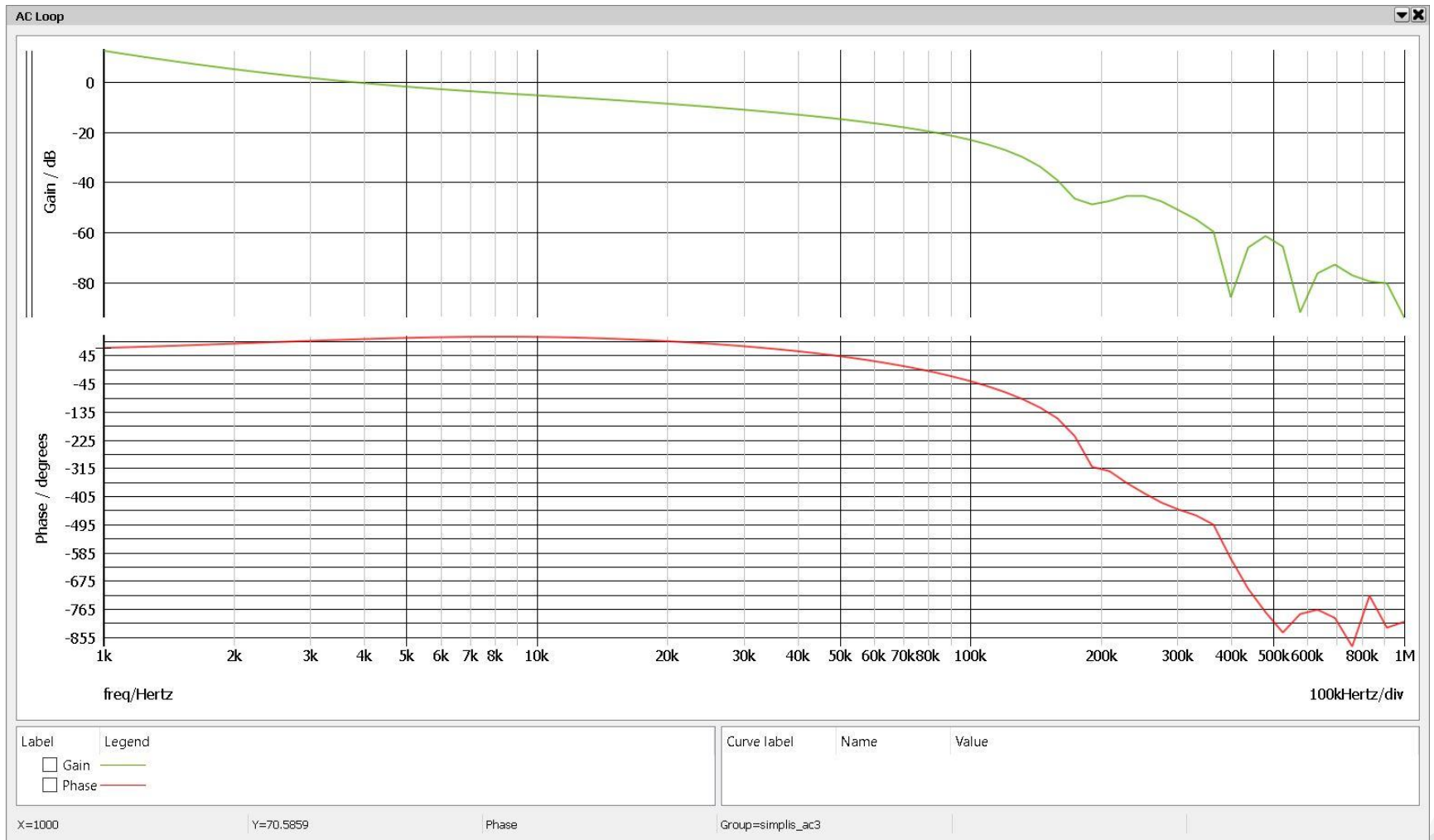
Schematic



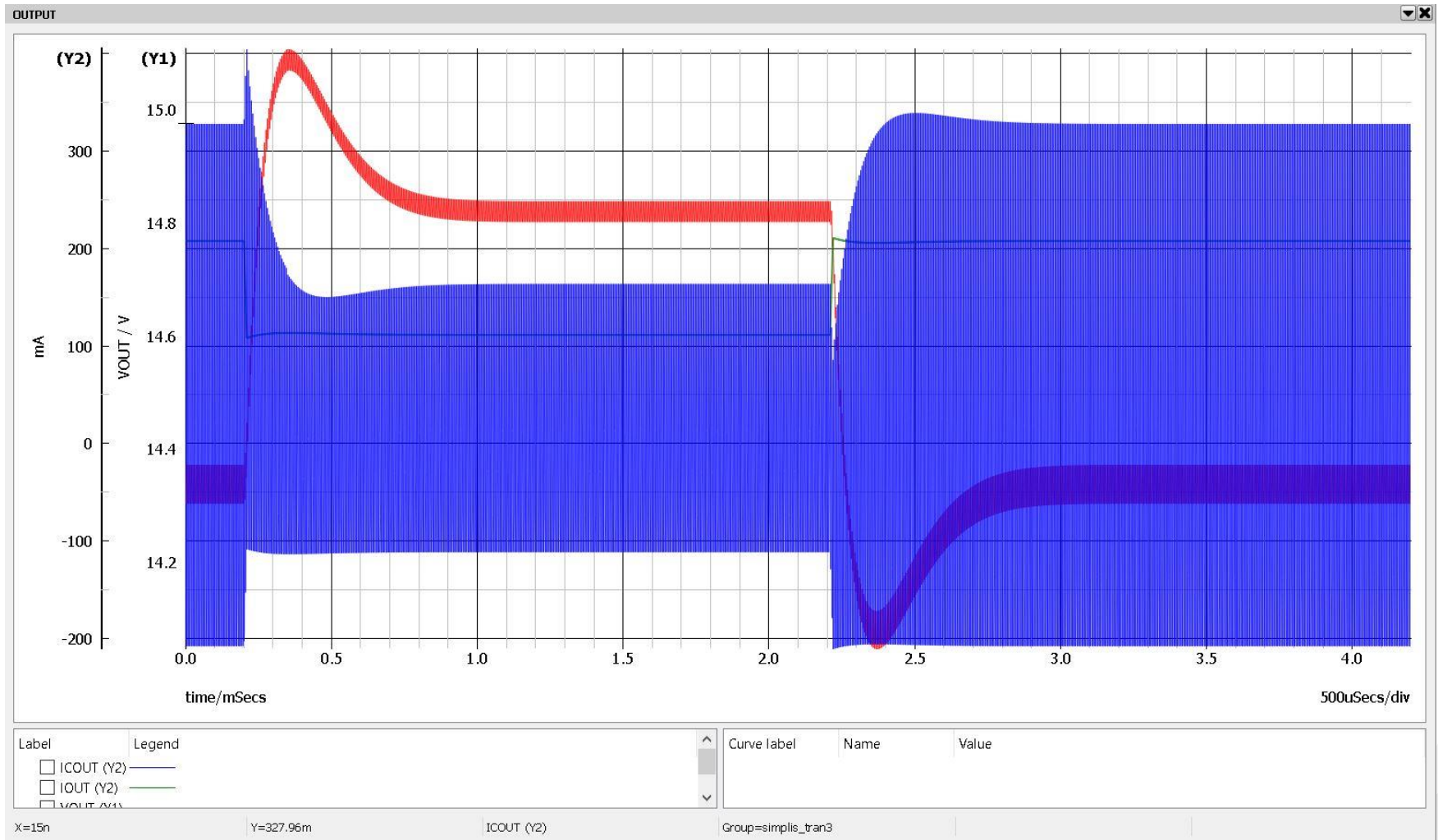
Switching Waveforms



Bode Plot



Load Step Transient Response



Startup

