

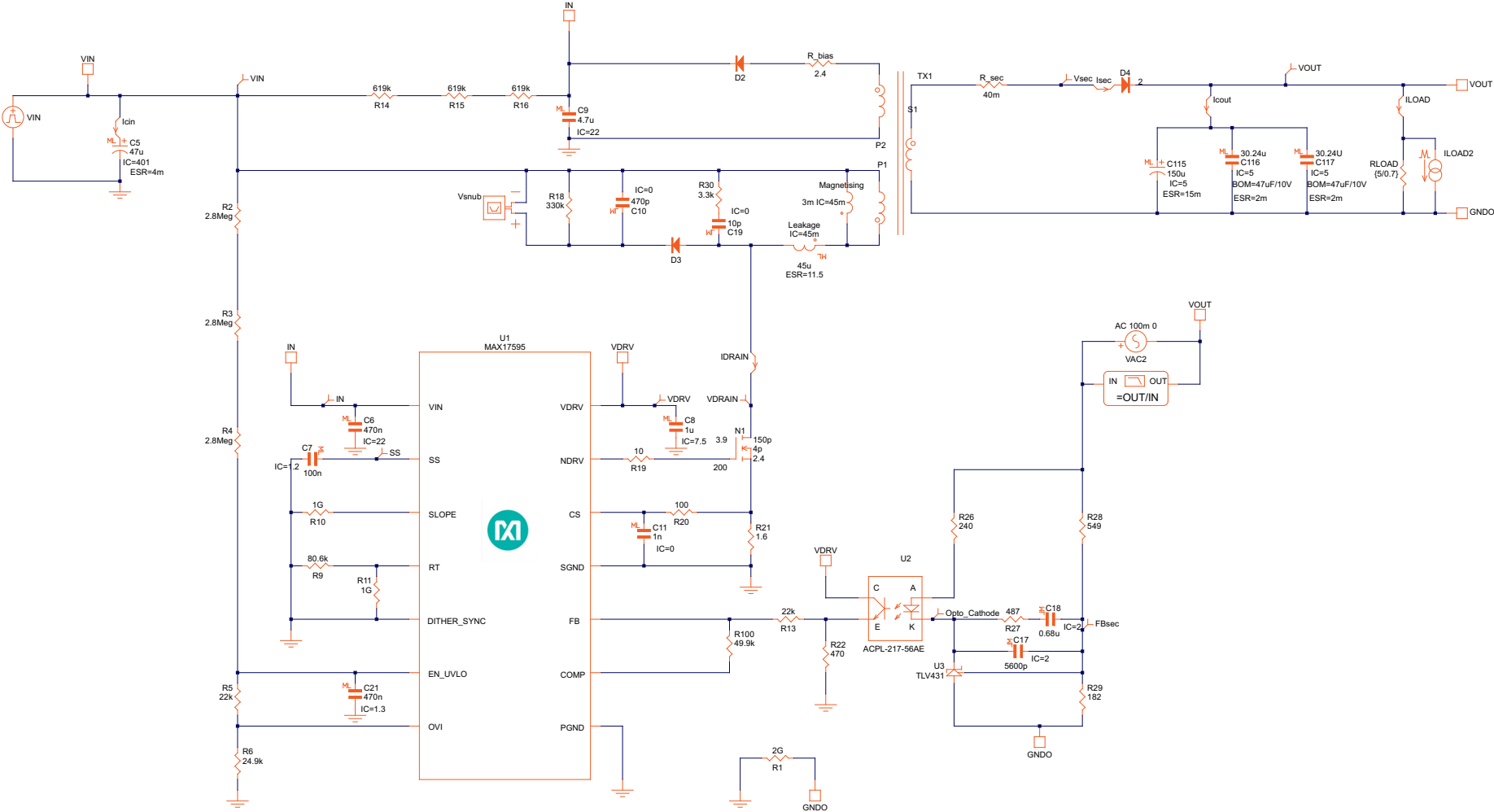
MAXREFDES1183

OASIS Schematic Documentation

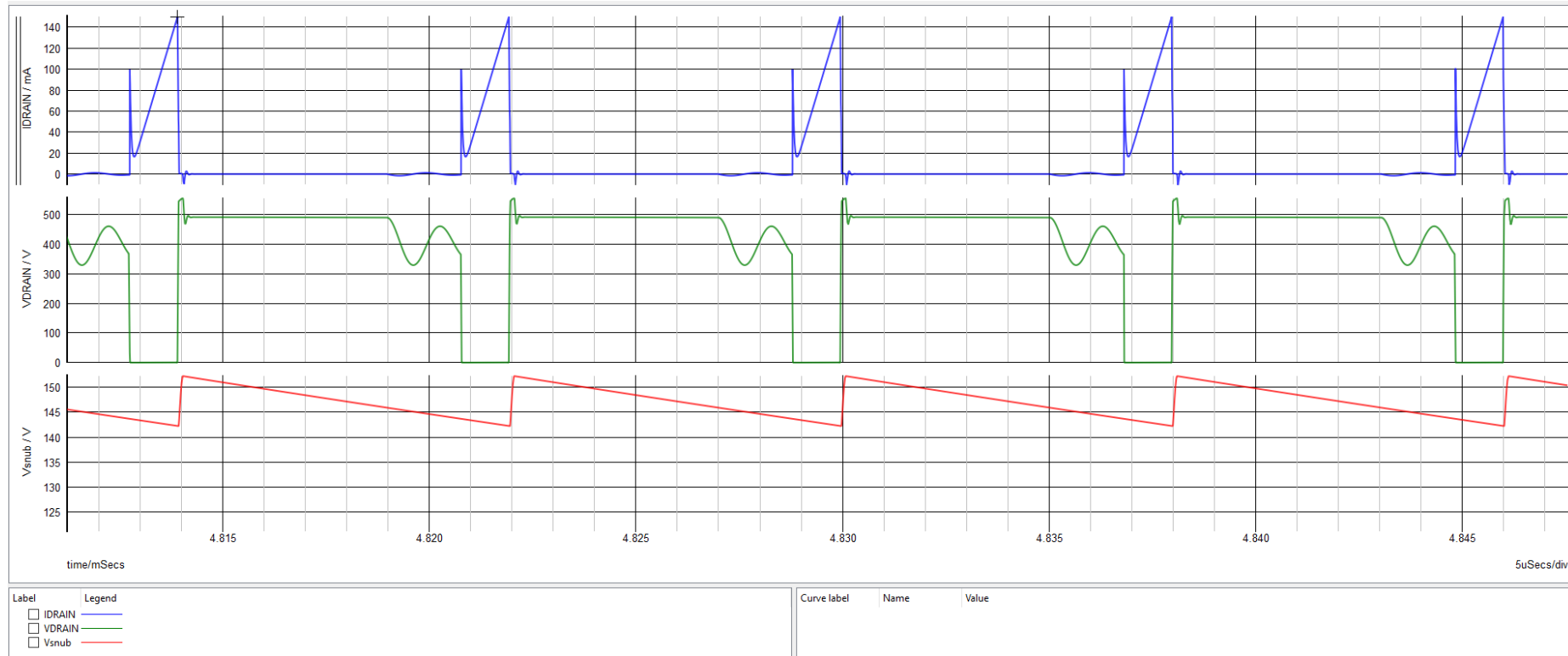
MAXREFDES1183 Design Requirements and Configuration

Primary Specifications	Values	Comments
Part Number:	MAX17595	
Schematic Name:	MAXREFDES1183	
Mode:	Offline Isolated DCM Flyback	
Default Simulation:	Steady-State (POP), AC Loop, Load Step	
Design Requirements:		
Vin(Max):	176VAC	
Vin(Nom):	220VAC	
Vin(Min):	284VAC	
Switching Frequency:	140kHz	
Vout:	5V	
Iout:	0.7A	

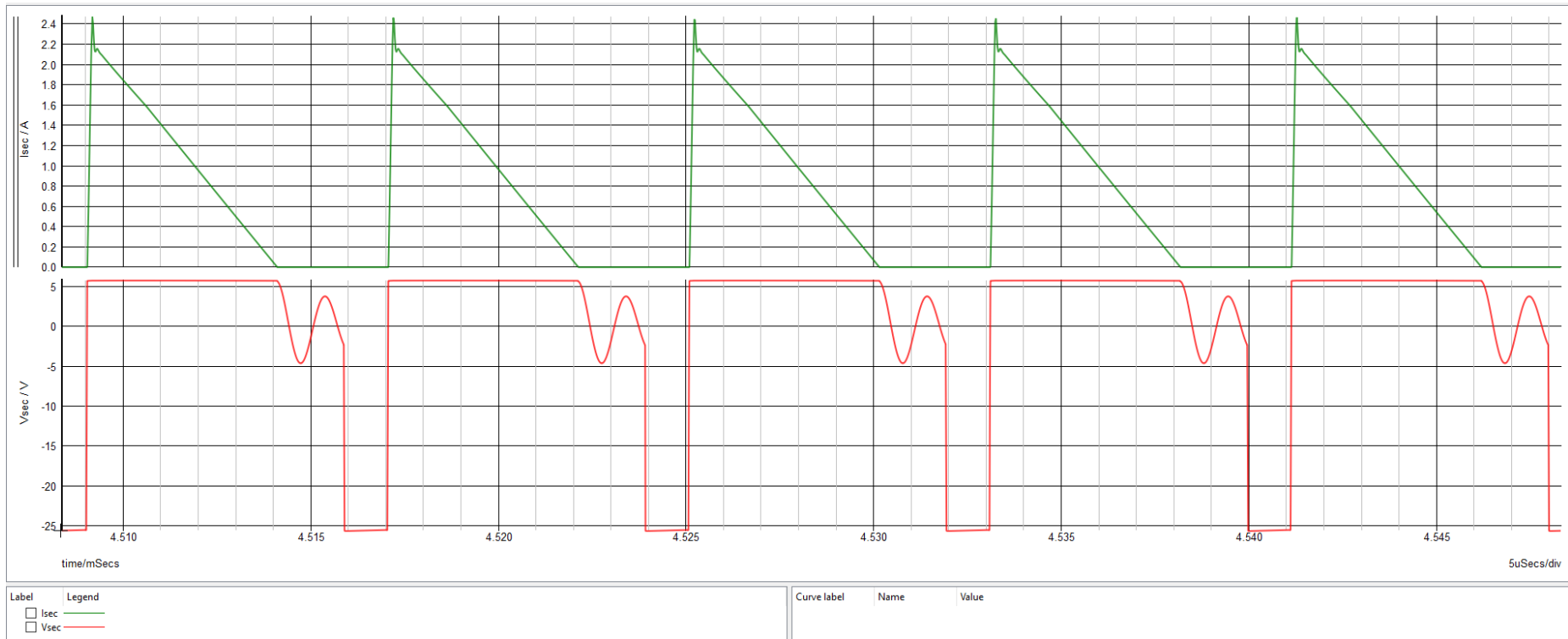
Schematic



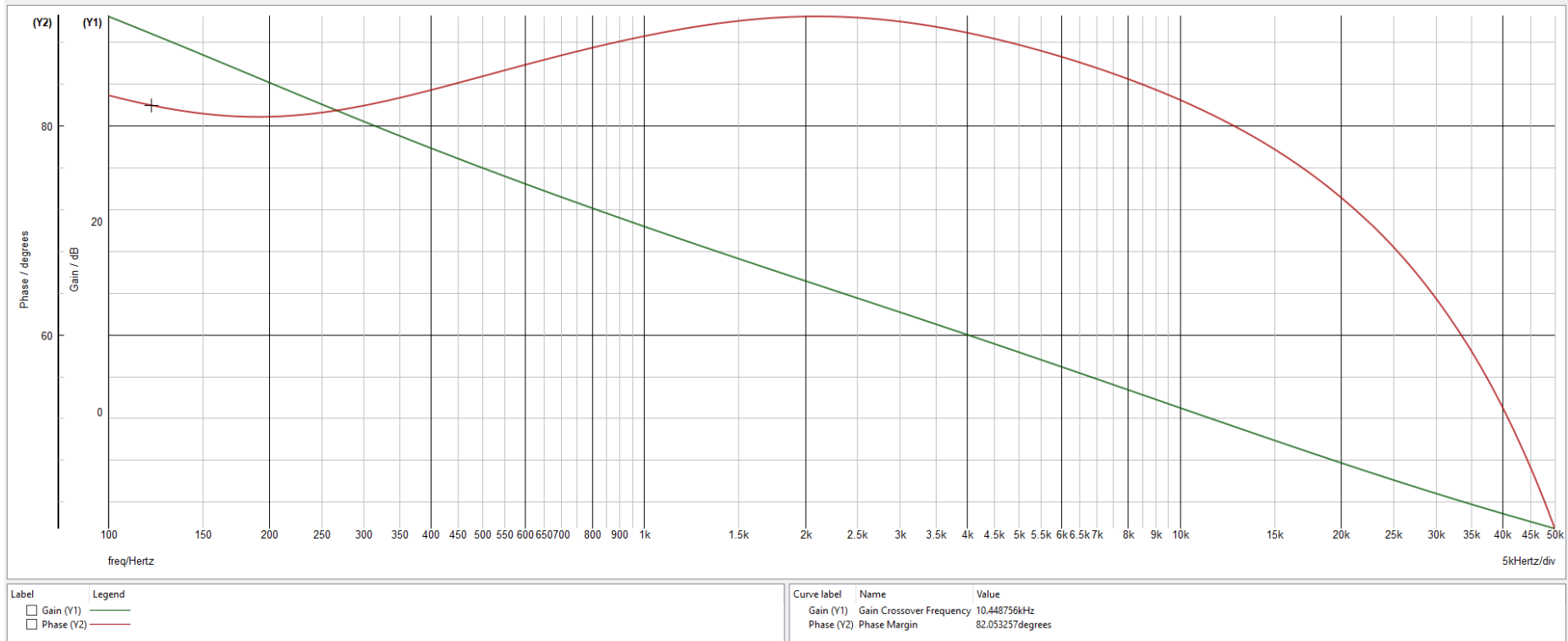
MAXREFDES1183 Primary Switching Waveforms



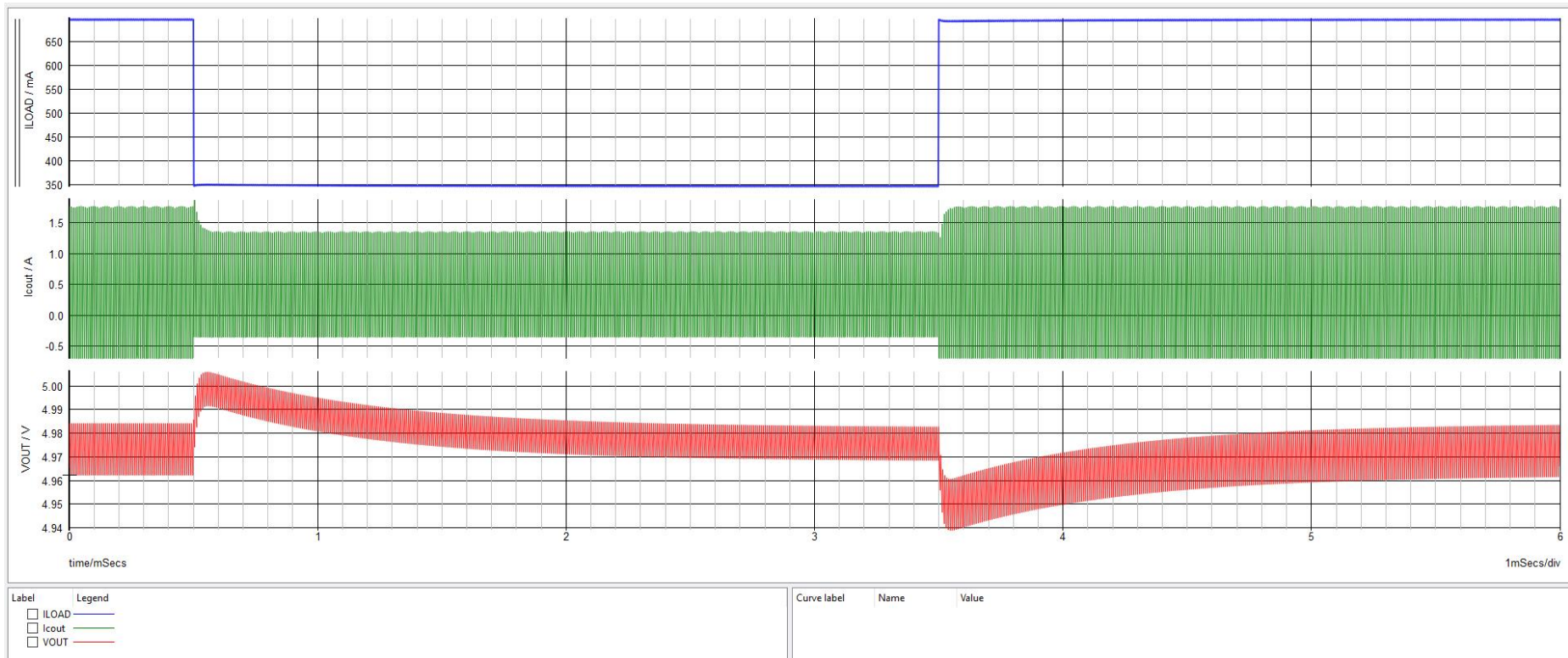
MAXREFDES1183 Secondary Switching Waveforms



MAXREFDES1183 Bode Plot



MAXREFDES1183 Load Step Transient Response



MAXREFDES1183: Startup Waveforms

